



### 3/108 Stephen Terrace Gilberton SA

4  3  2 

Positioned on Linear Park in prestigious Gilberton, this architecturally designed residence is within walking distance to the CBD, Melbourne Street, Adelaide Oval and Walkerville shops and cafes. This light-filled property is an entertainer's delight with glass bi-fold doors opening on to an undercover alfresco entertaining area surrounded by lush established gardens.

Upon entering the house, the amount of space and light in the open plan living area invites you in. A large void over the living area coupled with double story high windows fills the house with light.

The spacious, well equipped kitchen and open plan living all flow seamlessly into the outdoor entertaining area. A BBQ area with its own pergola is nestled between the

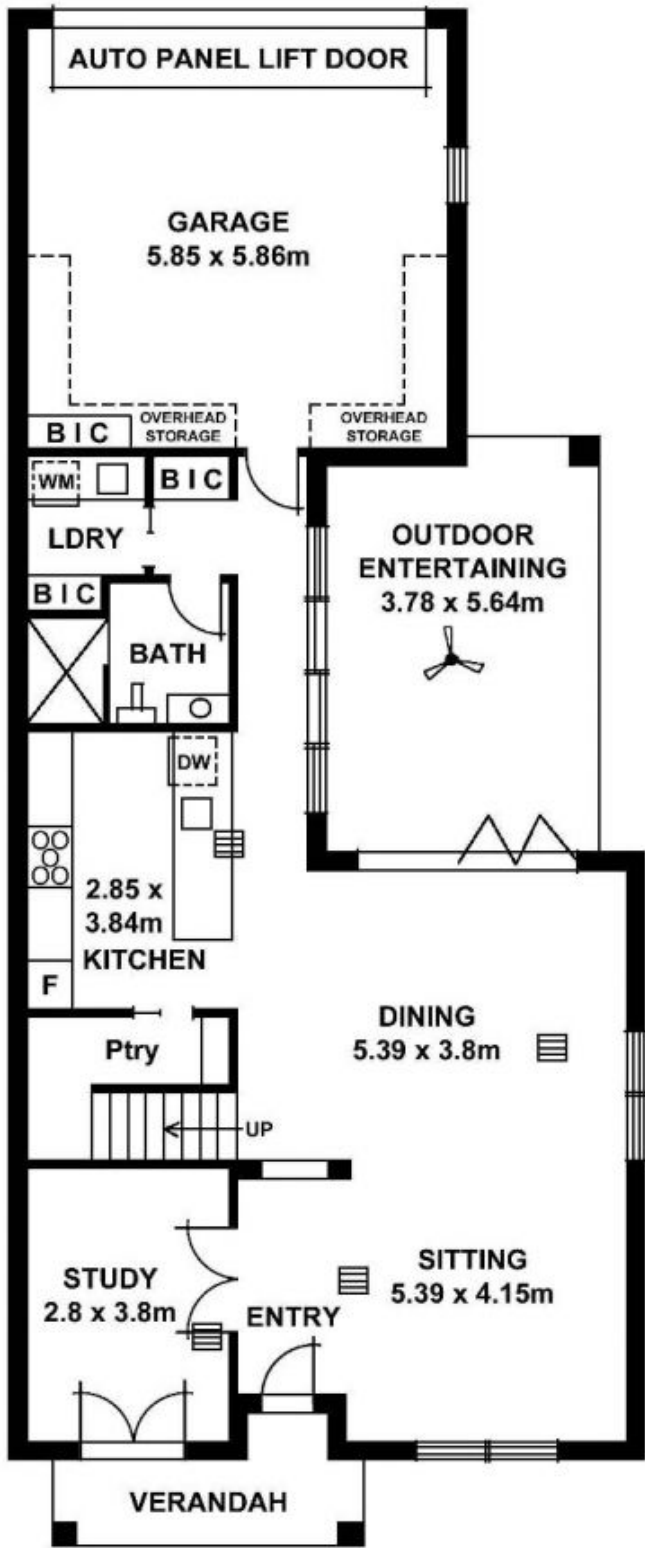
**Price** : \$ 950,000

**View** : <https://www.foxrealestate.com.au/property/3108-stephen-terrace-gilberton-sa/5738976>

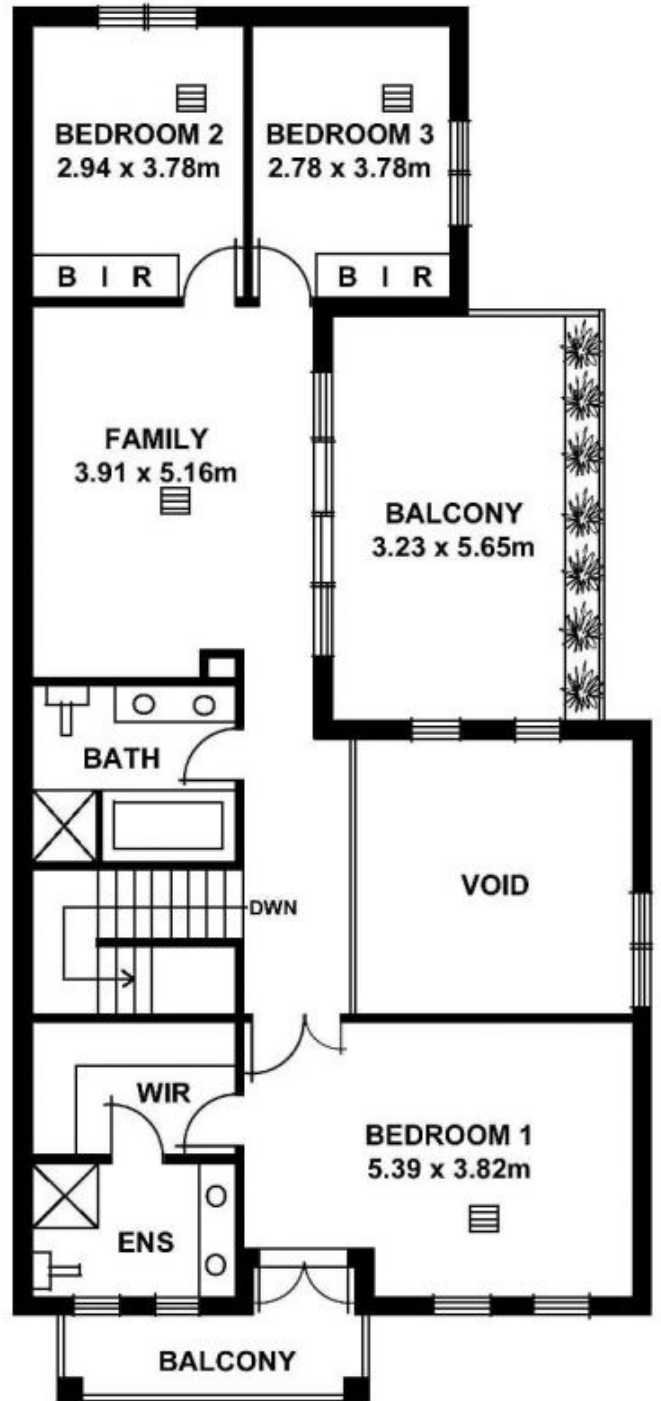


**Andrew Fox**  
08 8267 4995

Lower Living	99.46
Garage	39.04
Upper Living	107.15
Balconies	23.12
O/Entertain	21.31
Total approx	290.08sqm



**LOWER LEVEL**



**UPPER LEVEL**