



2/581 Portrush Road Glenunga SA

4  2  2 

Tucked securely and privately behind a high brick fence is this surprisingly large family home on an easy to maintain allotment with both formal and informal living areas and further scope to update.

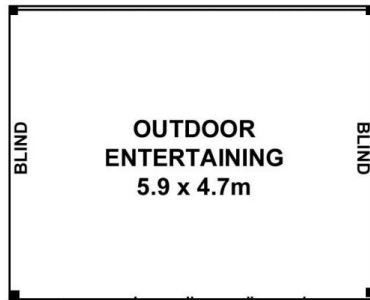
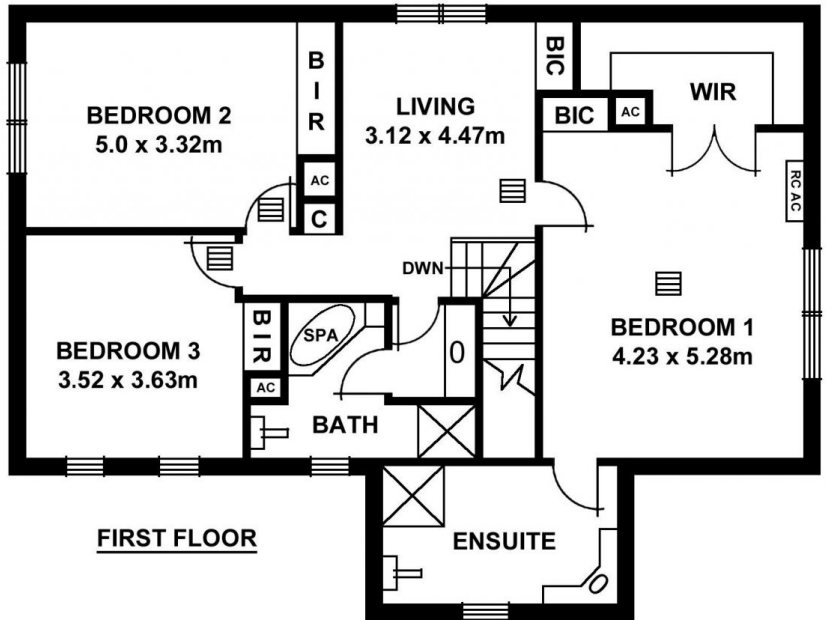
Price : \$ 650,000

Land Size : 651 sqm

View : <https://www.foxrealestate.com.au/property/2-581-portrush-road-glenunga-sa/5739078>

Comprising of-

- * 4 beds, or three and a study
- * Formal living and dining
- * Open plan kitchen/ meals area
- * Third living area upstairs
- * Large master suite with large walk-in robe and en-suite
- * Two double bedrooms upstairs, both with built-in robes
- * Family size bathroom with separate bath and shower
- * Covered and paved outdoor area for year round entertaining
- * Downstairs WC, large enough to convert into a third



Ground Floor	119.98
First Floor	109.66
O/Entertain	27.73
Garage	36.83
Total approx	294.20sqm

