



701/10 Park Terrace Bowden SA

2  2  1 

This modern 2 bedroom, 2 bathroom apartment offers high quality fittings and fixtures, a spacious floor plan and stunning views. Currently leased at \$460pw until March 2022, this property makes an ideal investment.

View : <https://www.foxrealestate.com.au/property/70110-park-terrace-bowden-sa/5975293>

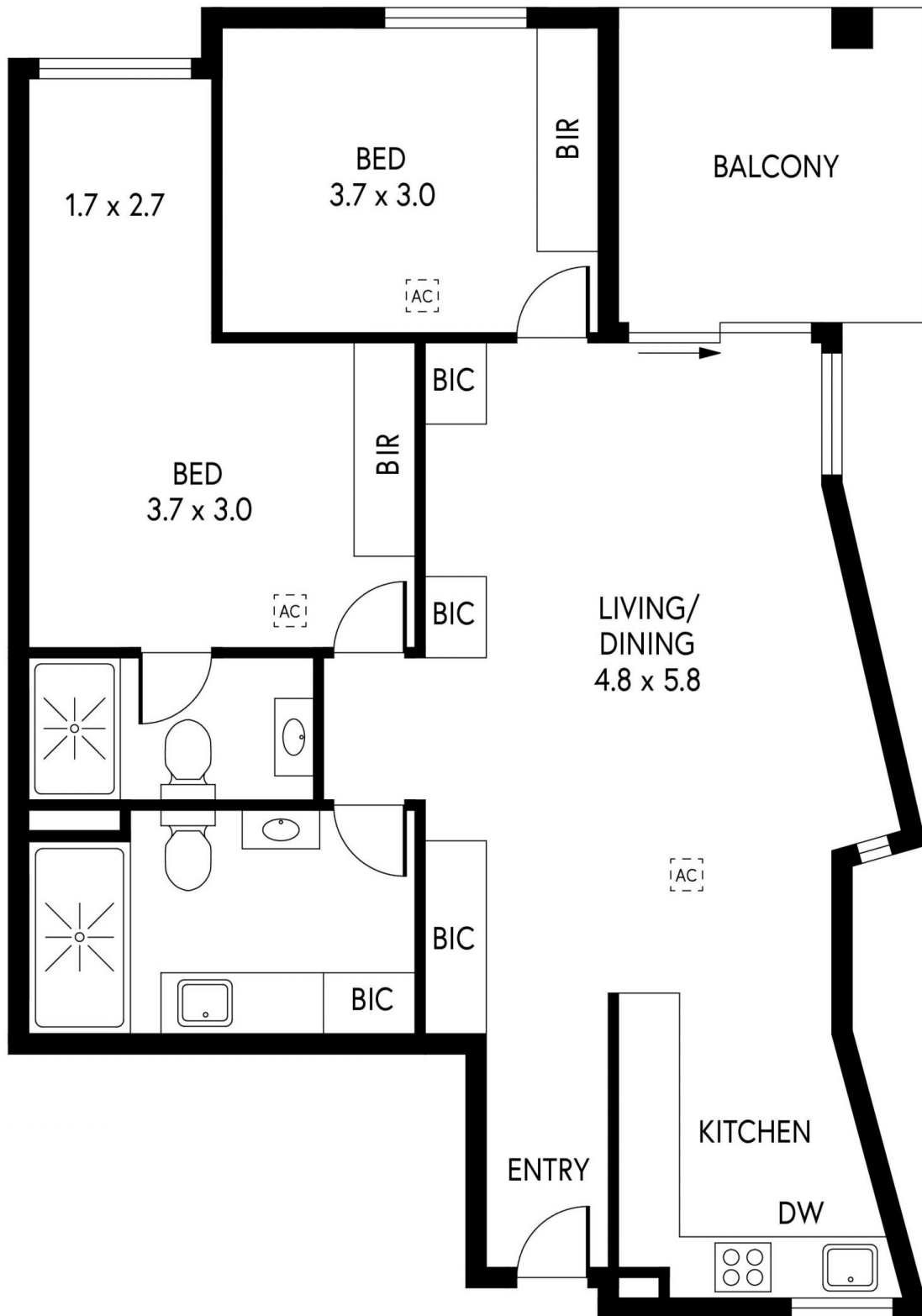
Located opposite a reserve with picturesque views. Uniquely located on the 7th floor that opens up directly to the building's own internal/private atrium area.

Within walking distance to the popular Plant 4 Bowden, short stroll to public transport (tram is free), the Entertainment Centre and only 5 minutes into North Adelaide and the CBD by car.

With Plant 3 Precinct, another exciting entertainment and dining venue opening within months, NOW is the time to move to Bowden!



Sam Grover
0419 379 947



701/10 PARK TERRACE, BOWDEN

INTERNAL - 89.95 SQM
 EXTERNAL - 9.33 SQM
 TOTAL - 99.28 SQM