



1 Kernick Way Brompton SA

4  3  2 

Conveniently located in the rapidly growing inner north of Adelaide's CBD this cosmopolitan town home offers a place to call home and outstanding easy-care living for those with a busy lifestyle.

View : <https://www.foxrealestate.com.au/property/1-kernick-way-brompton-sa/6365260>

With an abundance of light and a neutral colour scheme throughout - an adaptable floor plan to suit individual needs set over 3 levels.

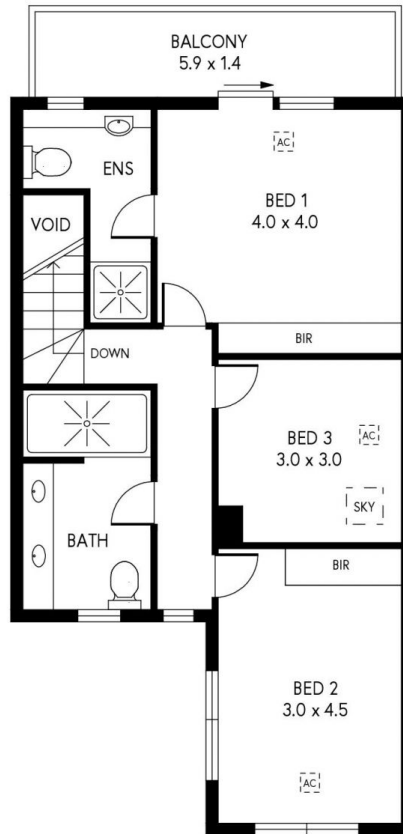
Featuring secure rear access double lock up garage, flexible living areas, extensive open plan meals and a well-appointed kitchen adjacent bright and open family room with balcony and alfresco - the perfect place to contemplate the start of your day? or relax and unwind at the end of a busy day.



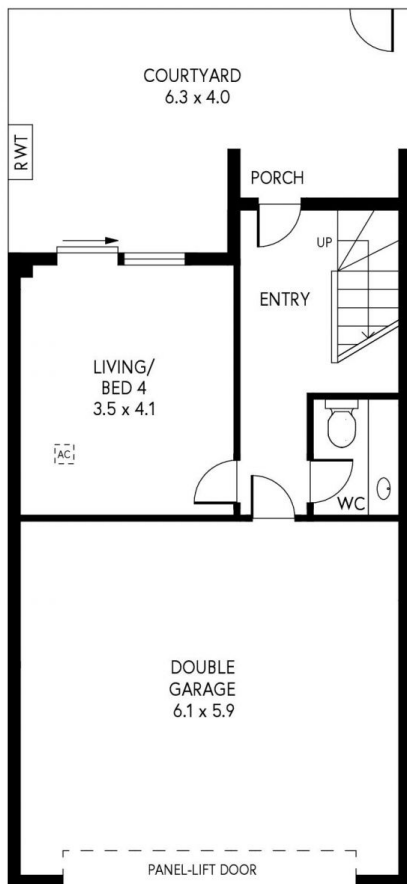
Marina Ormsby
0488 183 521



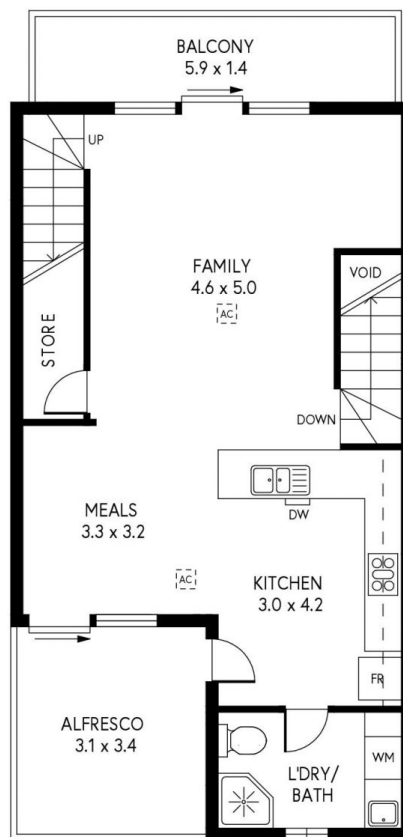
Rachael Pavli
08 8267 4995



SECOND FLOOR



GROUND FLOOR



FIRST FLOOR

1 KERNICK WAY, BROMPTON



INTERNAL - 204.4 SQM
EXTERNAL - 50.8 SQM
TOTAL - 255.2 SQM