



30 Tyne Street Gilberton SA

3  2  2 

Sited on 696 sqm approx., the residence retains many original features and comprises arched hallway, sitting room opening to dining room, main bedroom with ensuite and WIR and a further 2 bedrooms.

Generous, north facing kitchen/family room housed within the brick extension opens to vine clad terrace and pool beyond. Private rear garden and tool sheds complete this offering.

Situated in this ever popular neighbourhood on the edge of the Linear Park with the convenience of Melbourne Street, Walkerville Terrace, a host of excellent schools within easy reach. Ready for the next custodian.

[For full version visit the website](https://www.foxrealestate.com.au/property/30-tyne-street-gilberton-sa/6928020)

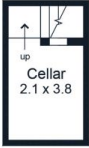
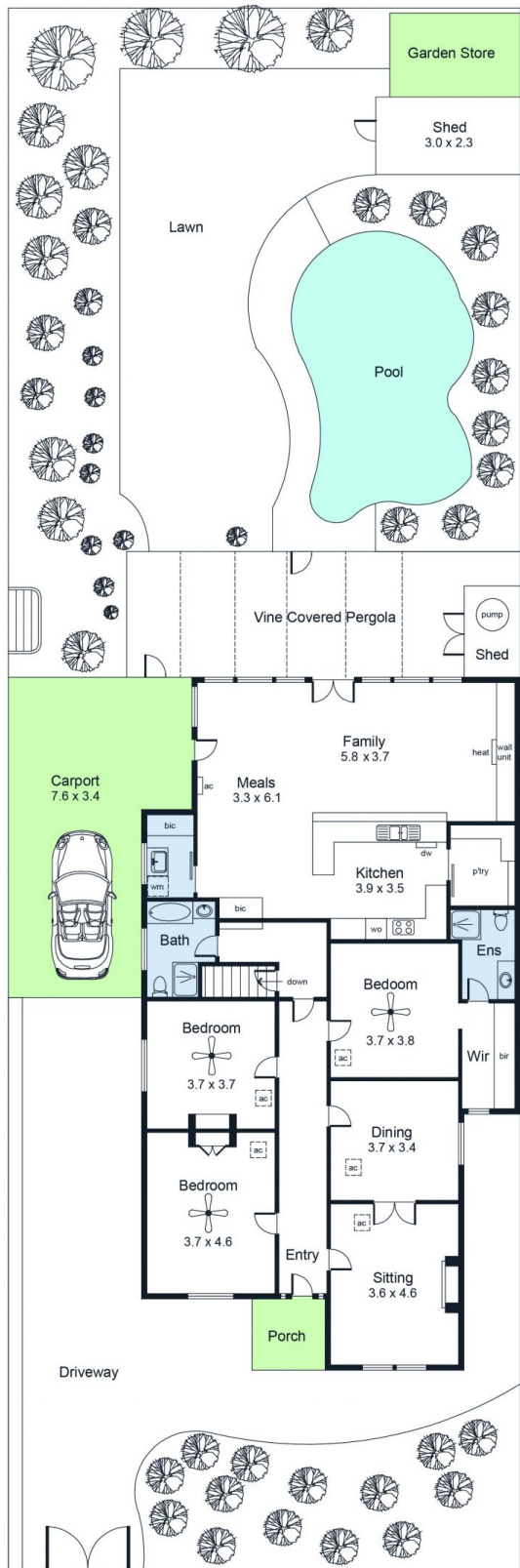
Type : House
Land Size : 696 sqm
View : <https://www.foxrealestate.com.au/property/30-tyne-street-gilberton-sa/6928020>



Candy Bennett
0418 816 639



Edwina Lehmann
0414 607 218



Area (Estimate only)	
Living	163.9 m ²
Cellar	8.0 m ²
Carport	29.6 m ²
Porch	4.2 m ²
Total	205.7 m²



For illustrative purposes only.
All measurements are approximate