



43 Clifton Street Malvern SA

6  4  2 

A rare opportunity to acquire this exquisite and unusually large Federation "Arts and Crafts" family home, proudly sited on an irreplaceable 1,486 sqm approx.

With seamless renovations and extensions crafted by the current owner/builder, this expansive home exudes understated luxury and quality throughout.

Ideally suited to the large or growing family, this quintessential family home represents the best in multi-generational living with still further room to expand by virtue of the substantial roof space in the original section of the home.

Centrally positioned amidst a wonderful garden with numerous nooks and crannies, the kids are sure to discover their own "secret garden" and experience many

Land Size : 1486 sqm
View : <https://www.foxrealestate.com.au/property/43-clifton-street-malvern-sa/7268781>



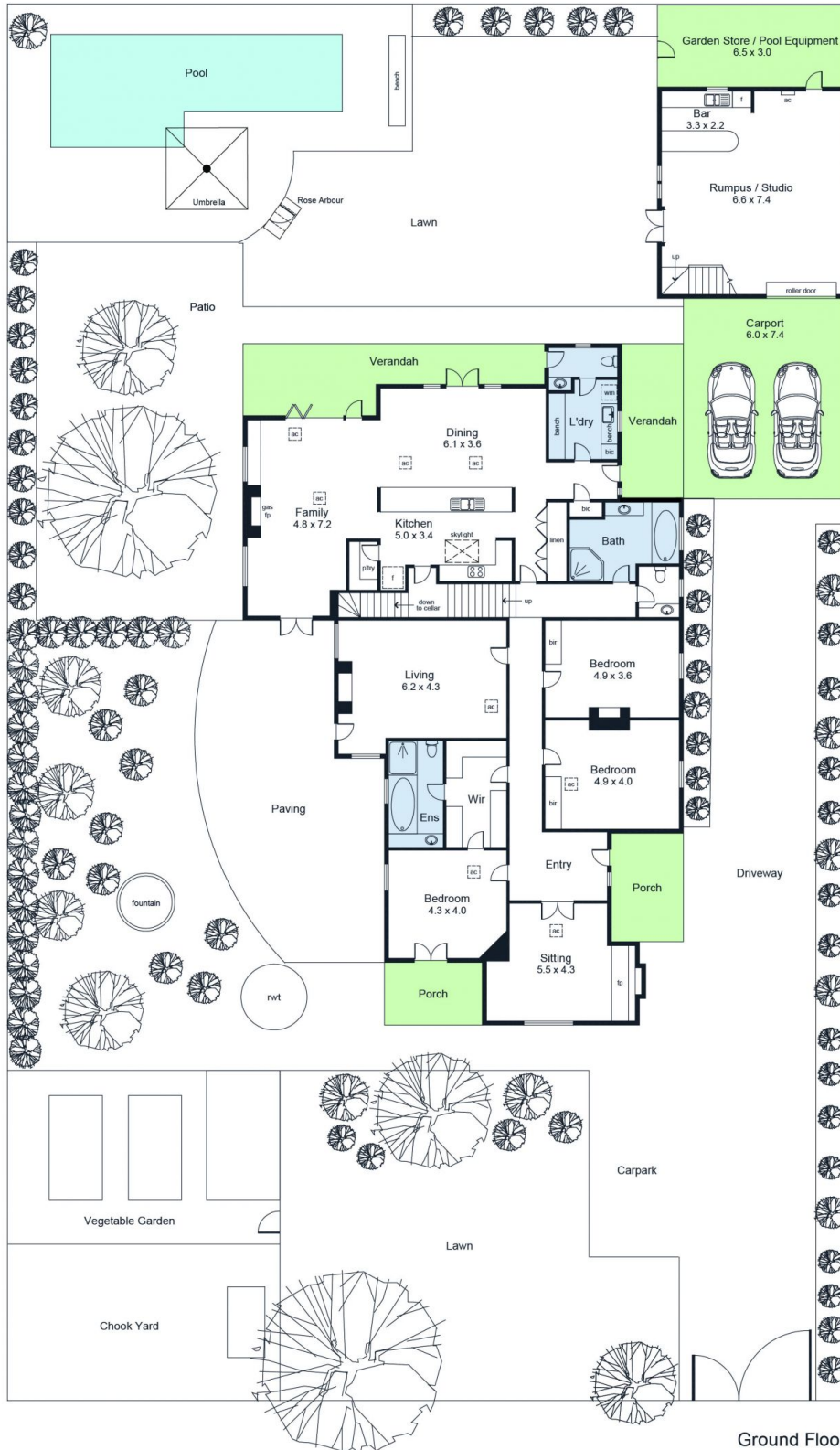
Candy Bennett
 08 8267 4995



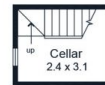
Mark Conway
 08 8267 4995



First Floor



Ground Floor



Area (Estimate only)	
Ground Floor	313.8 m ²
First Floor	129.5t m ²
Cellar	7.5 m ²
Carport	44.4 m ²
Verandah	34.9 m ²
Garden Store	20.8 m ²
Porch	18.6 m ²
Total	569.5 m²

For illustrative purposes only.
All measurements are approximate