

## 11 Capper Street Camden Park SA

2  1  2 

Perfectly positioned on a large allotment of 892sqm (approx) of land with a huge 18 metre frontage!

The current residence is a solid large family home comprising of two double bedrooms, large formal sitting room, eat-in kitchen, separate bathroom and laundry plus a huge back yard.

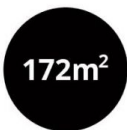
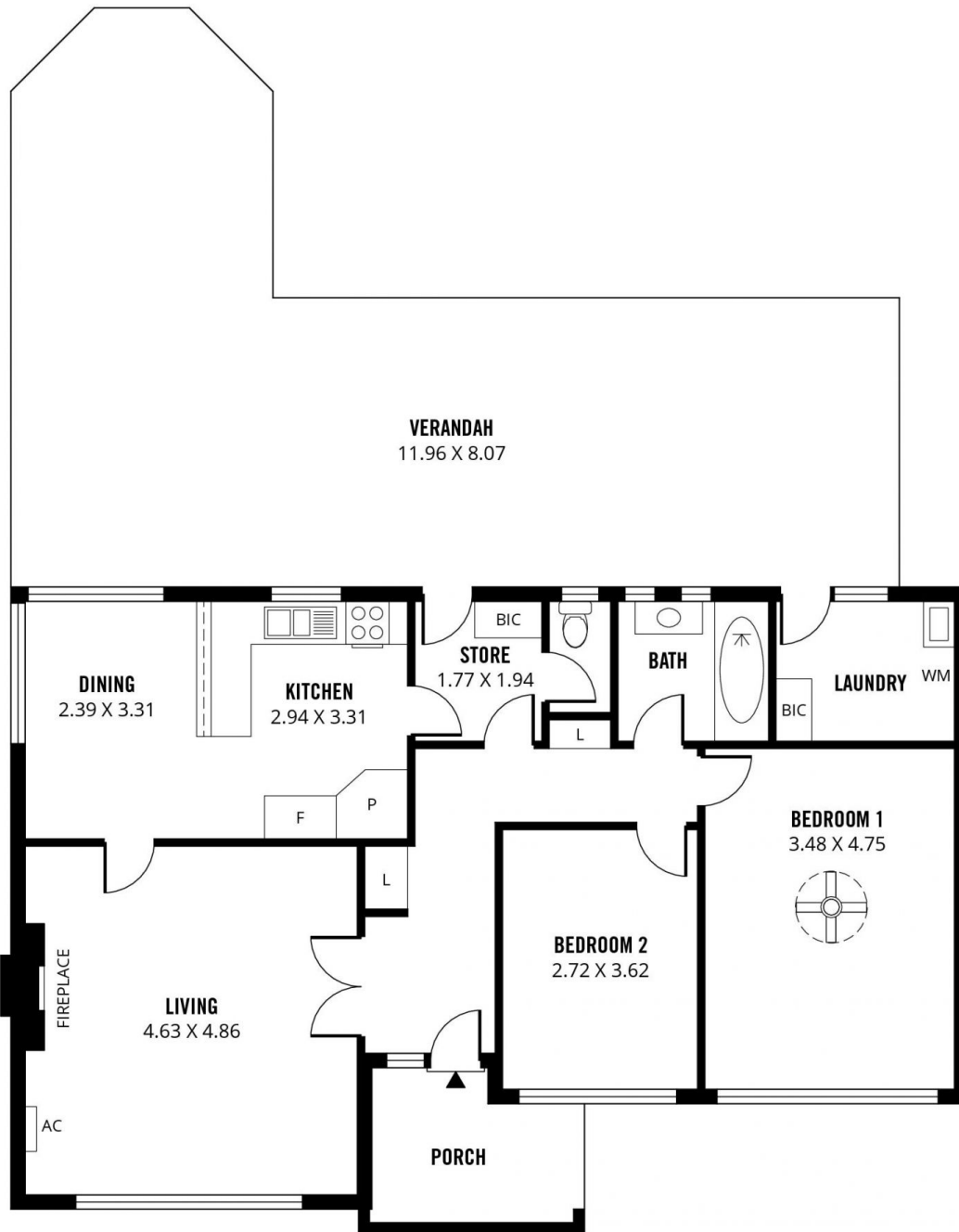
Located in a peaceful family friendly location within easy reach of the City and Glenelg Beach. Choose to shop at Harbour Town, Westfield Marion or cosmopolitan Jetty Road.

Various schooling options can be found at Immanuel College, Sacred Heart College, Plympton International College and St John the Baptist and Plympton Primary

**Land Size** : 892 sqm  
**View** : <https://www.foxrealestate.com.au/property/1-1-capper-street-camden-park-sa/7528587>



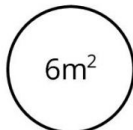
**Kirsty Davies**  
**08 8267 4995**



**TOTAL**



Living



Porch



Verandah



Scale in metres. This drawing is for illustration purposes only. All measurements are approximate and details intended to be relied upon should be independently verified.

Produced by **The Fotobase Group**