

12 Lerwick Avenue Hazelwood Park SA

5  3  6 

Celebrating the exemplary craftsmanship and inspired design of renowned South Australian builder Samuel James Homes this exquisite residence delivers an uncompromised family, living and entertaining experience with resort-style indoor to outdoor connectivity, luxe finishes and attention to detail.

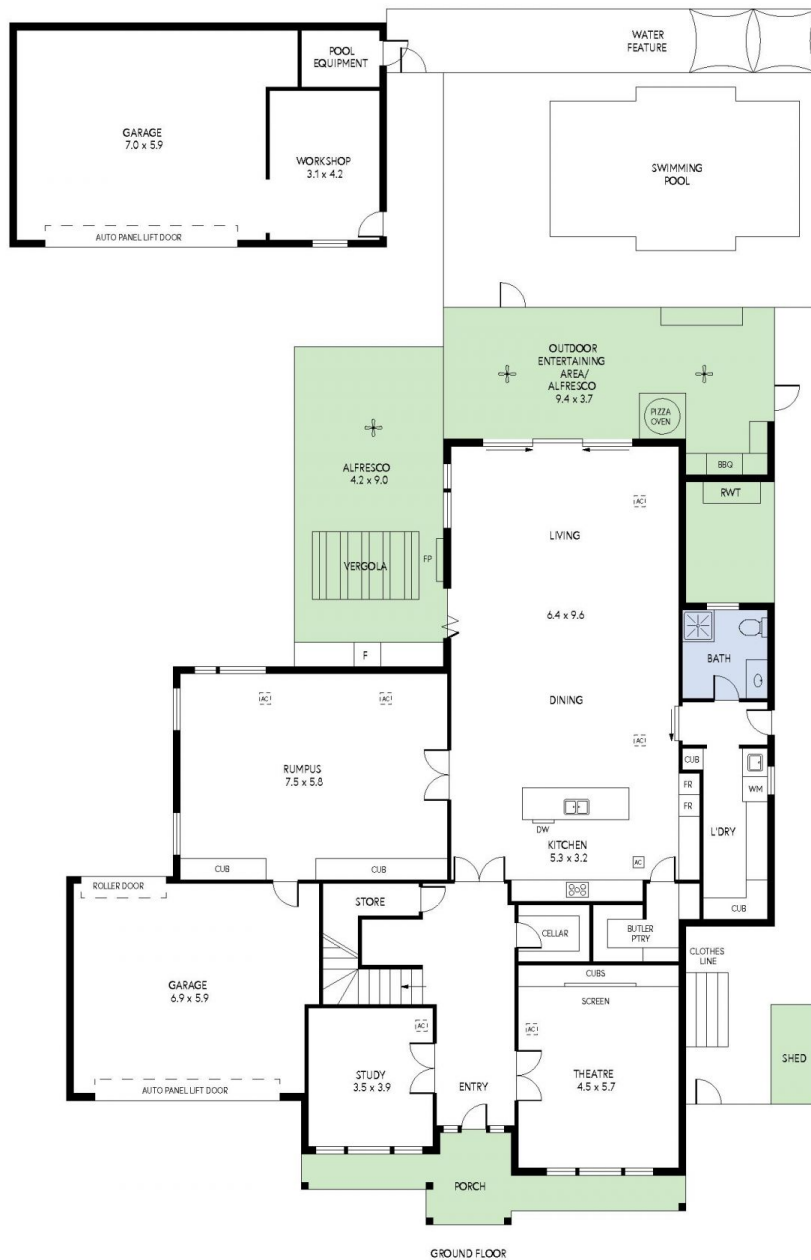
Set on approximately 1045sqm over 2 levels, the sumptuous fit-out is apparent upon entry with 3m ceilings highlighting the impressive light-filled dimensions. Finishes and fittings that are both beautiful and practical - custom cabinetry, Emperador marble, parquetry and Blackbutt timber floors, stone surfaces and travertine tiling.

Front of house rooms include a generous size study, a fully equipped home theatre with Panasonic projector screen

View : <https://www.foxrealestate.com.au/property/12-lerwick-avenue-hazelwood-park-sa/7532255>



Marina Ormsby
08 8267 4995



12 LERWICK AVENUE, HAZELWOOD PARK



INTERNAL - 442.9 SQM
EXTERNAL - 154.1 SQM
TOTAL - 597.0 SQM

PRODUCED BY CLIQUECREATIVE