

373 Anzac Highway Camden Park SA

3  1  2 

This Spacious and solidly build home C.1950 is perfect for the buyer searching for spacious internal living, without the added fuss of maintaining a large backyard. Occupy or invest, this home offers the very best of local lifestyle offered by popular Camden Park. Currently tenanted at \$400/pw.

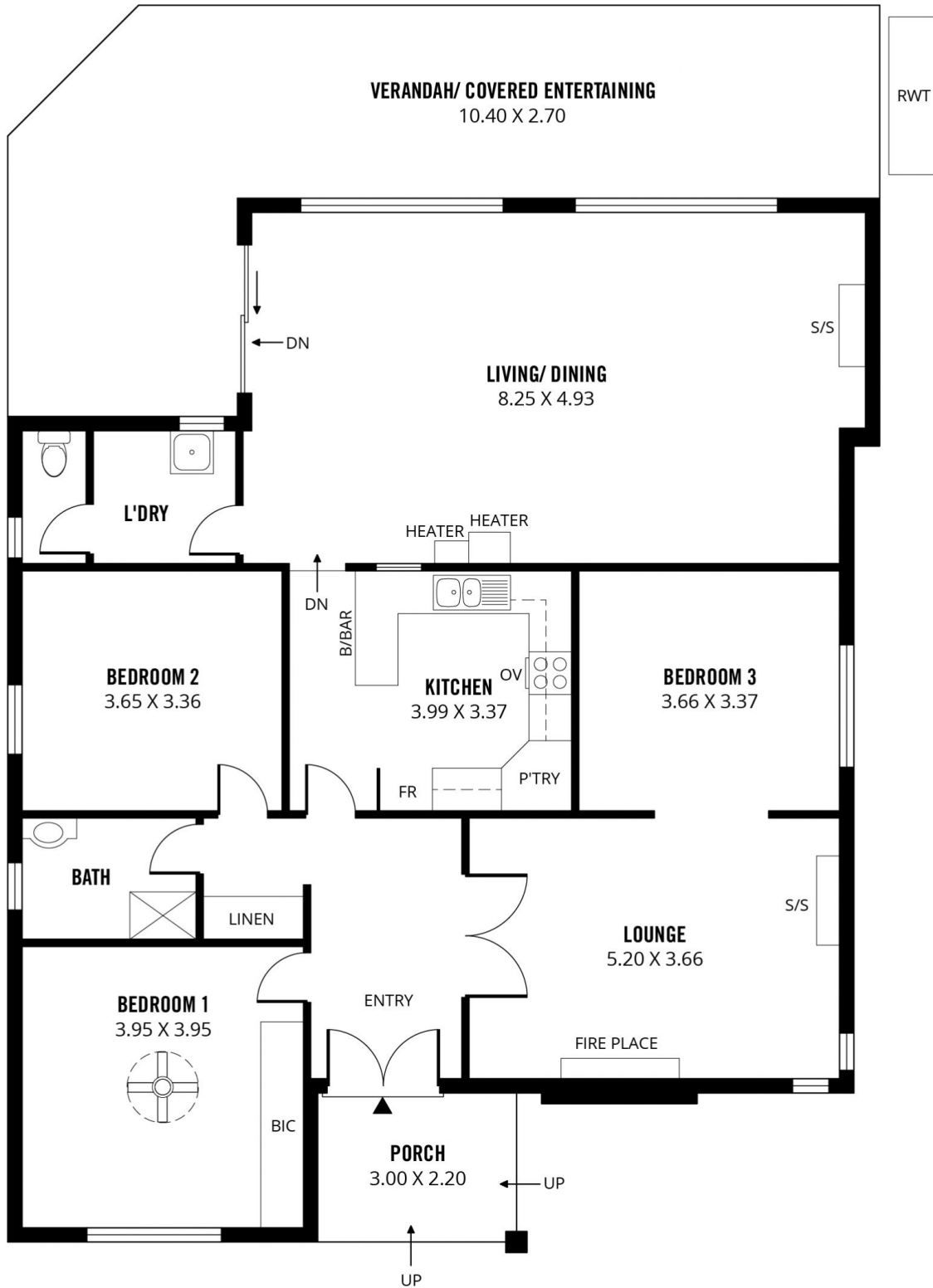
Building Size : 21 sqm
Land Size : 375 sqm
View : <https://www.foxrealestate.com.au/property/373-anzac-highway-camden-park-sa/7894341>

INSIDE THE HOME

It's sleek and efficiently designed downstairs European style kitchen and living areas are ideal for time poor professionals, and those who enjoying maximising life and entertaining, rather than cleaning. The majority of the ground floor living areas, corridors, and bedrooms have timber floorboards, with high quality tiling in the kitchen and bathroom - having been recently improved.



Nick Pelvay
08 8267 4995



198m²

TOTAL

150m²

Living

7m²

Porch

41m²

Verandah/
Covered Ent.

Scale in metres. This drawing is for illustration purposes only. All measurements are approximate and details intended to be relied upon should be independently verified.

Produced by **The Fotobase Group**