



19 Park Terrace Gilberton SA

4  2  2 

Steeped in the rich history of Gilberton, this original dairy farm exudes timeless charm and allure. Nestled on 659sqm of prime land, the property boasts meticulously manicured gardens at the front and a fuss-free, low-maintenance rear garden.

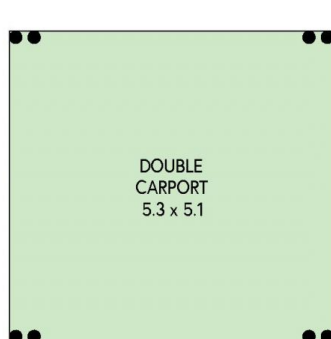
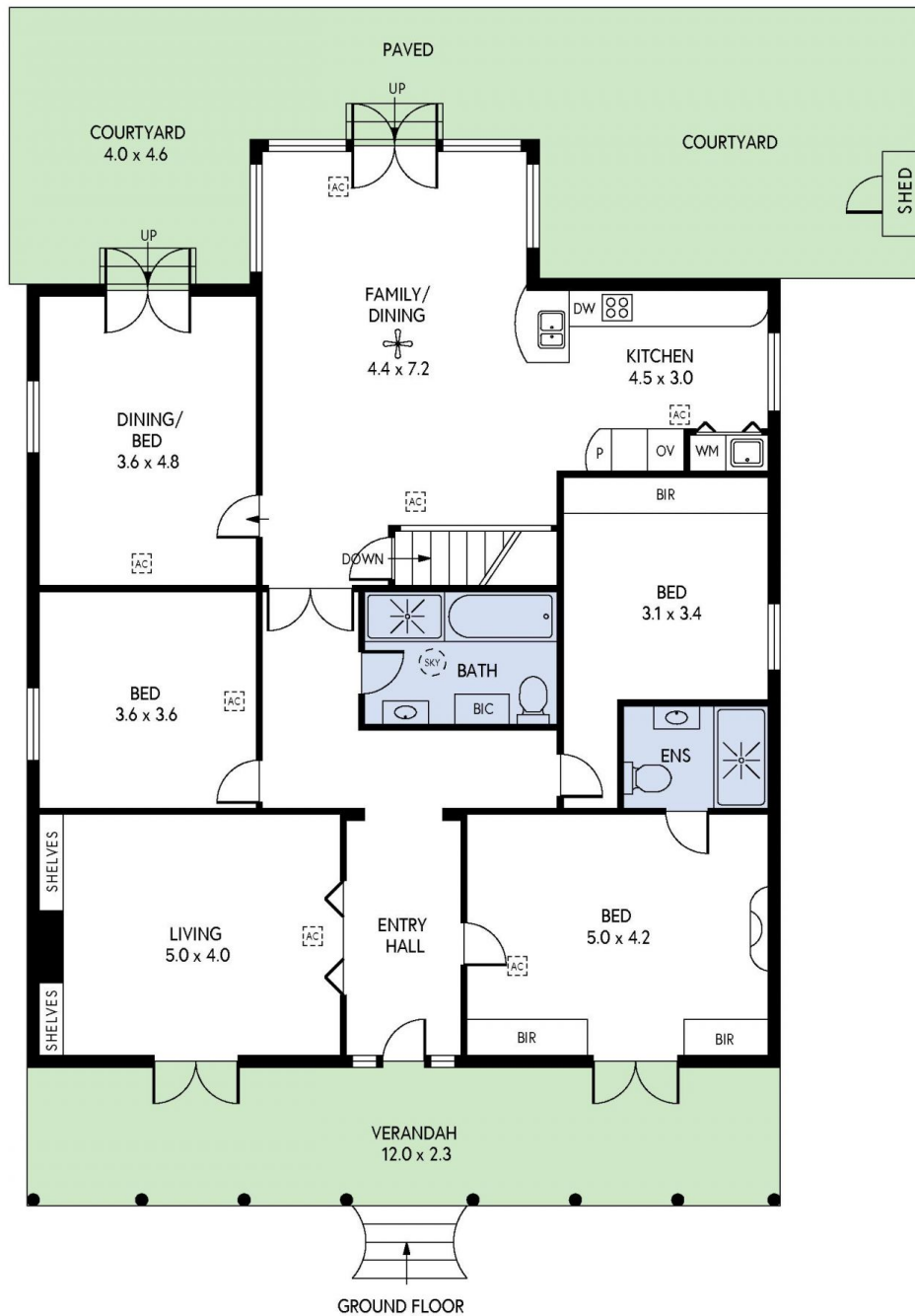
Prepare to fall in love from the moment you step through the wide front entrance with original lead light and stunning arched hallway. The elegant front sitting room features a character fireplace and built-in bookshelves with French doors leading onto the front verandah.

The expansive master bedroom, offering a serene view of the front garden, is equipped with built-in robes and a modern ensuite, granting access to the verandah through French doors.

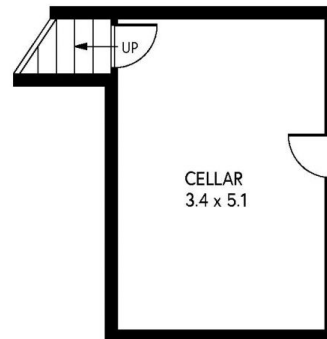
Price : UNDER CONTRACT
Building Size : 200 sqm
Land Size : 659 sqm
View : <https://www.foxrealestate.com.au/property/19-park-terrace-gilberton-sa/7947147>



Kirsty Davies
 08 8267 4995



(NOT IN POSITION)



LOWER GROUND FLOOR

19 PARK TERRACE, GILBERTON



INTERNAL - 196.9 SQM
EXTERNAL - 113.5 SQM
TOTAL - 310.4 SQM