

**28 Palmer Avenue Myrtle Bank SA**

4  2  2 

Phone for Inspection

This residence is a true statement, designed by the renowned David Fraser Architects group. Where natural timber and matte black finishes stylishly accentuate harmonious lines, creating a magnificent abode that integrates with its natural surroundings. The design is breathtaking, featuring a grand entrance, soaring ceiling heights, a statement staircase, strategically placed windows capturing panoramic views of Adelaide and the CBD lights, designer lighting indoors and outdoors, a Sonos Sound System, and a gas log fireplace.

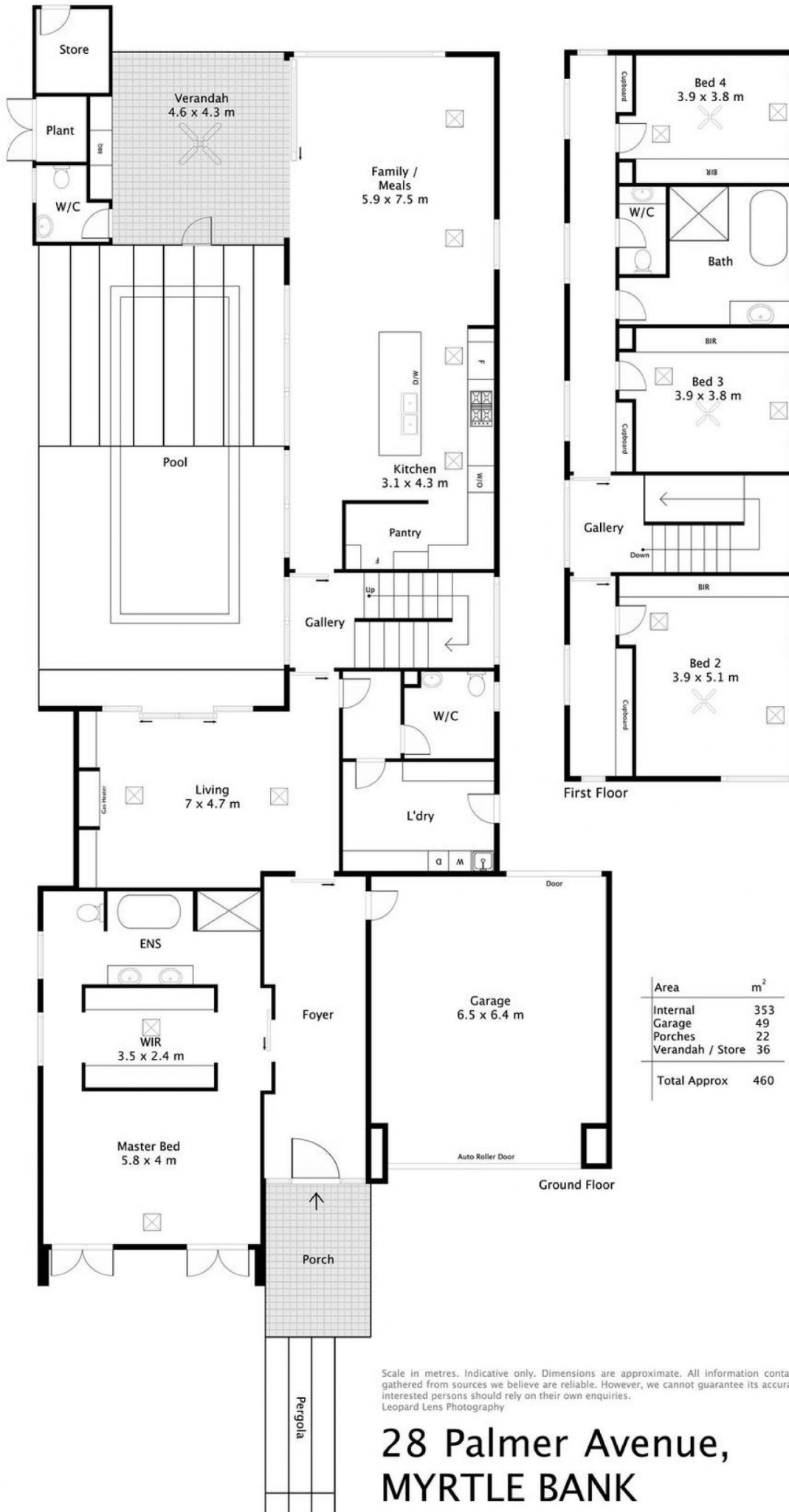
Beyond its showcase appeal this home is a blend of form and function, offering a sanctuary for relaxation and the creation of lasting memories. Whether indulging in a captivating book by the fire, lounging by the poolside,

**Land Size** : 796 sqm

**View** : <https://www.foxrealestate.com.au/property/28-palmer-avenue-myrtle-bank-sa/7947926>



**Andrew Fox**  
08 8267 4995



# 28 Palmer Avenue, MYRTLE BANK

Area	m <sup>2</sup>
Internal	353
Garage	49
Porches	22
Verandah / Store	36
<b>Total Approx</b>	<b>460</b>