



66 First Avenue Nailsworth SA

2  1  2 

Offers By | Tuesday 11th June at 2pm

Enormous potential to either renovate or redevelop (subject to necessary consents). Sure to appeal to both developers and owner occupiers wanting a project.

Land dimensions - 21.34m x 39.62m approx

With the popular precincts of Prospect and North Adelaide nearby, plus a range of excellent schools, the property is within the Botanic High School, Adelaide High School and Nailsworth Primary zones.

Other amenities include Sefton Plaza and Northpark

[For full version visit the website](https://www.foxrealestate.com.au)

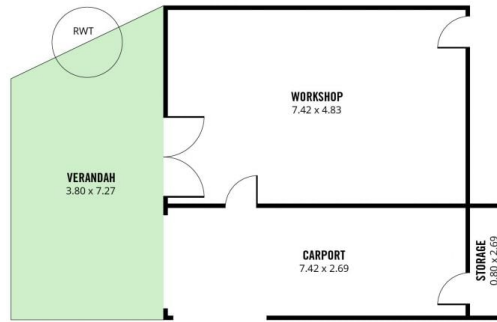
Type : House
Land Size : 845 sqm
View : <https://www.foxrealestate.com.au/property/6-6-first-avenue-nailsworth-sa/8023318>



Candy Bennett
08 8267 4995



Edwina Lehmann
0414 607 218



66 FIRST AVENUE, NAILSWORTH

237m²

TOTAL

120m²

Living

20m²

Carport

10m²

Porch

49m²

Verandah

36m²

Workshop

2m²

Storage



Scale in metres. This drawing is for illustration purposes only. All measurements are approximate and details intended to be relied upon should be independently verified.

Produced by The Fotobase Group